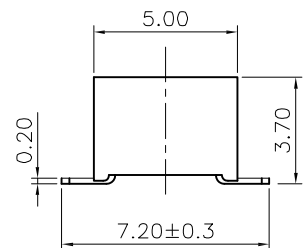
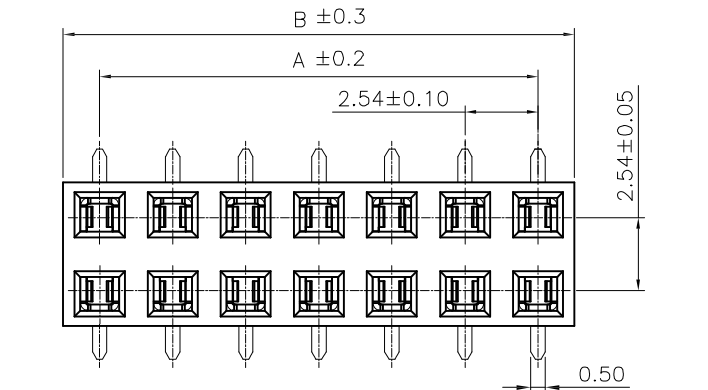


REV.	ECN NO.	DESCRIPTION	DATE	DESIGN
A		初版发行	2021.08.23	Jackson



TECHNICAL CHARACTERISTICS

**MATERIAL**  
 INSULATOR: PA9T  
 FLAMMABILITY RATING: UL94-V0  
 COLOR: BLACK  
 CONTACT MATERIAL: COPPER ALLOY  
 CONTACT TYPE: STAMPED  
 CONTACT PLATING: GOLD  
 PITCH: 2.54 MM  
**ENVIRONMENTAL**  
 OPERATING TEMPERATURE: -40 UP TO 125°C  
 COMPLIANCE: LEAD FREE AND ROHS

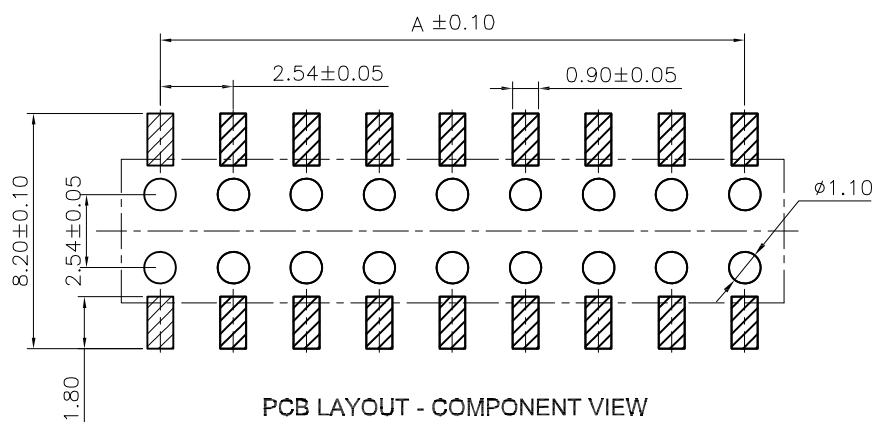
**ELECTRICAL**  
 CURRENT RATING: 3 A  
 WORKING VOLTAGE: 250 VAC  
 INSULATOR RESISTANCE: >1000 MOHM  
 DIELECTRIC WITHSTANDING VOLTAGE: 500 VAC/MN  
 CONTACT RESISTANCE: 20 mOHM MAX

**SOLDERING**  
 JEDEC LEAD FREE REFLOW SOLDERING

**PACKAGING**  
 TAPE REEL

PIN数	DIM. A	DIM. B
4	2.54	5.08
6	5.08	7.62
8	7.62	10.16
10	10.16	12.70
12	12.70	15.24
14	15.24	17.78
16	17.78	20.32
18	20.32	22.86
20	22.86	25.40
22	25.40	27.94
24	27.94	30.48
26	30.48	33.02
28	33.02	35.56
30	35.56	38.10
32	38.10	40.64
34	40.64	43.18
36	43.18	45.72
38	45.72	48.26
40	48.26	50.80

PH25410(H)-XX X X X  
 WITHOUT "H" : WITH HALOGEN  
 WITH "H" : HALOGEN FREE  
 Pin NO. \_\_\_\_\_  
 Packing \_\_\_\_\_  
 0:TAPE&REEL  
 COLOR:  
 B:BLACK  
 PLATING  
 G:GOLD FLASH



PCB LAYOUT - COMPONENT VIEW

一般公差 TOLERANCES X. ±0.30 .XX ±0.15 .X ±0.20 .XXX ±0.10 ANGLES ±2°		希尔盛精密电子(昆山)有限公司		
檢驗尺寸標示 SYMBOLS INDICATE CLASSIFICATION DIMENSION ○ MARK IS CRITICAL DIM. ⊙ MARK IS MAJOR DIM.	品名 (TITLE) 2.54MM SMT DUAL SOCKET BOTTOM BOTTOM ENTRY	製圖 (DR) Jackson Wang 審核 (CHKD) Forest		
表面處理 (FINISH)	圖號 (DWG NO.) <b>C-PH25410H-XXXXX</b>	核准 (APPD) YXL		
比例 (SCALE) 1:1	單位 (UNITS) mm		張數 (SHEET) 1/1	SIZE A4 REV A